



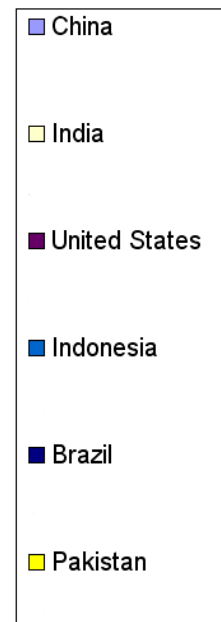
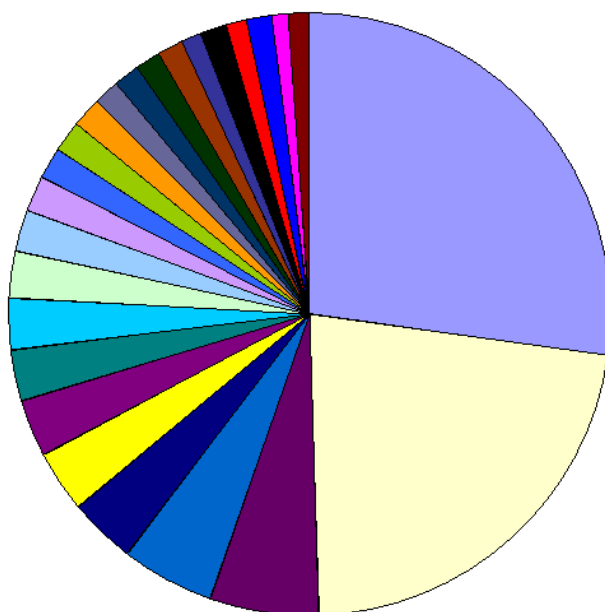
Year 8 Geography – China's Population Growth

There will only be one task this week and relates to the below graphs and a separate excel spreadsheet that is in a separate PDF. The excel spreadsheet looks slightly differently but hopefully you can figure out where the text links up.

I'd like you to look at the follow graphs, data, and information and complete a report that sums up China's population changes over the past 50 years. You should include:

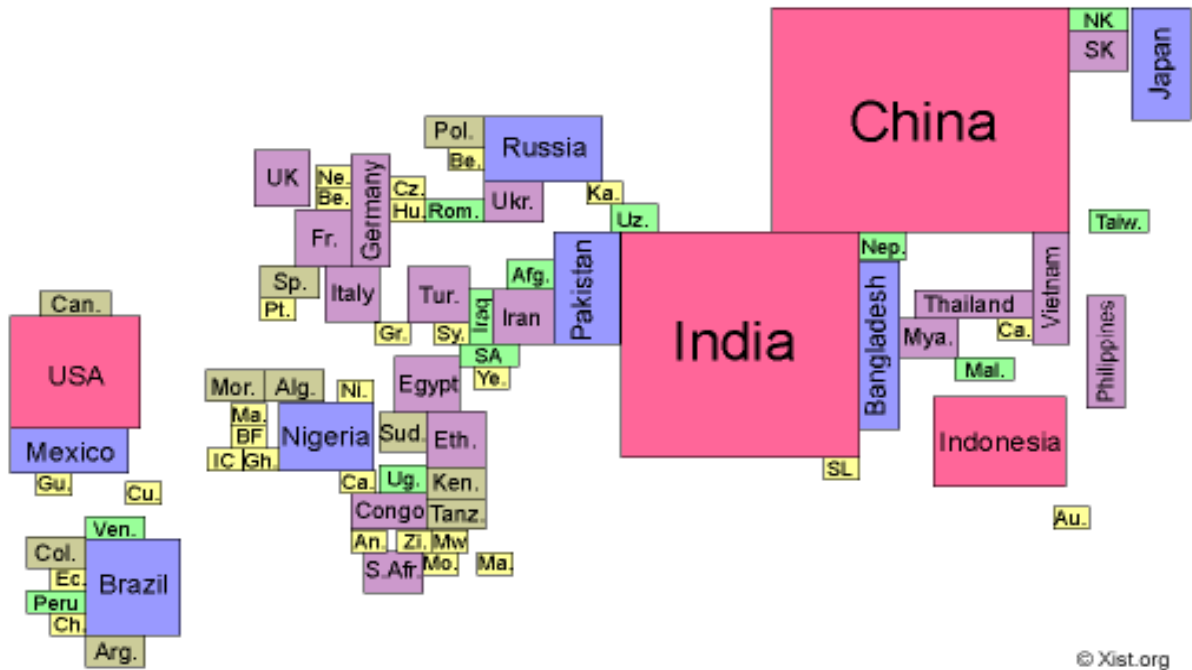
- Population change over time
- China, in comparison, to the rest of the world.
- China's growth and how it links to the economy.
- China, in comparison, to other Asian countries. Try to think of everything else you've studied so far with regards to China. Publish it in any way you like and ensure you include the negative and positives associated with population in this way. Good luck!

Population - top 25 countries



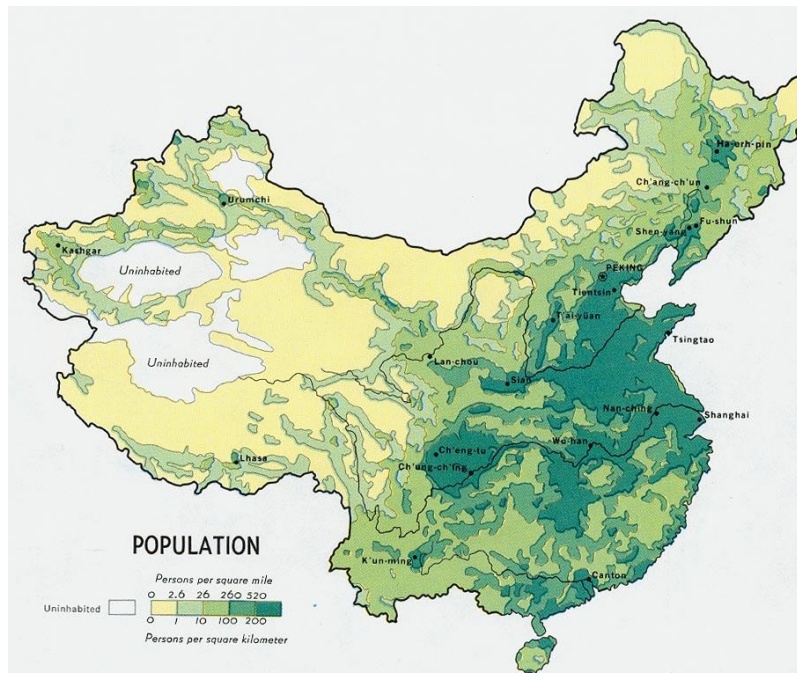


Over a quarter of the world's population lives in China.



© Xist.org

Map of the world drawn with countries proportional to their population size



Although China is the 5th largest country in the world in terms of area, most of the country is uninhabitable and so the majority of the Chinese people are concentrated into the eastern half of the country.

