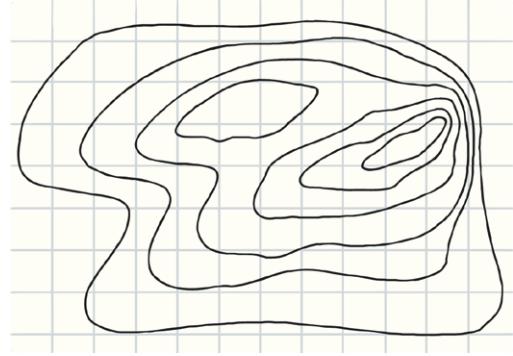


Make Your Own Contour Island!

You will need:

- card (cereal box)
- scissors
- glue
- coloured pencils or paint



Instructions

1. Cut out the box below to create your paper template. Trace around the edge of the rectangle onto a piece of card and cut it out. This will form the sea on which the island will be built.
2. On the paper template, cut around the edge of the island along the line which says 'sea level'. On a new piece of card, draw around the island and cut out the shape. Glue it onto the rectangle of card.
3. Cut around each contour line in turn and copy each layer onto a piece of card. Glue each layer onto your island. Use the picture of the island (above) to help you.
4. Colour or paint your model and add some landmarks. Remember to add the scale.

