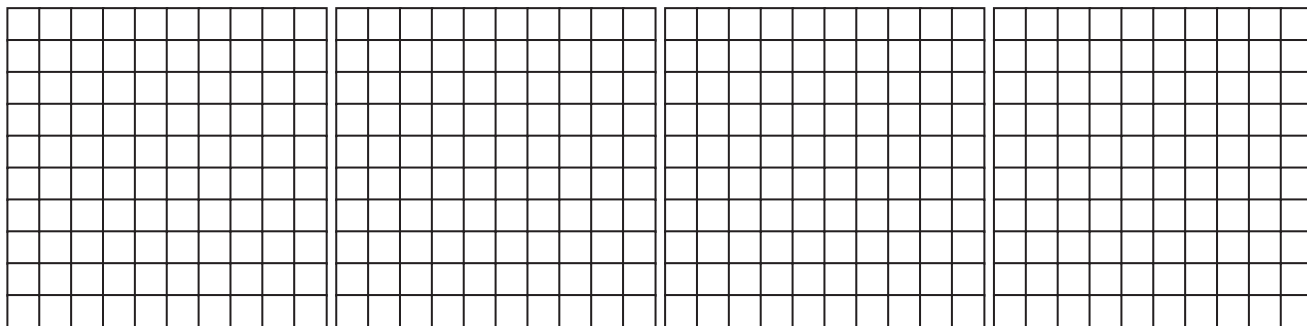


Think together

1 100 plates have a mass of 4 kg.

What is the mass of each plate?



4 ones = hundredths

hundredths \div 100 = hundredths

$4 \div 100 =$.

The mass of each plate is . kg

2 a) A 2-digit number divided by 100 is 0.16.

What was the starting number?

\div 100 = 0.16

b) $60 \div 10 = 6$

How can this help us to calculate

$60 \div 100 =$?

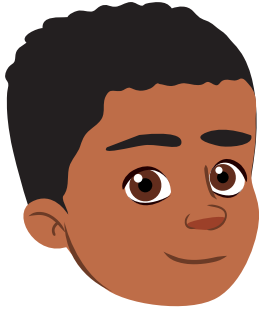
To divide by 100
I know I need to
divide by 10 and then
divide by 10 again.



CHALLENGE

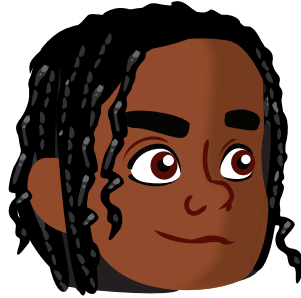
- 3 Three children have tried to complete different calculations.

What is the answer to Mo's calculation?



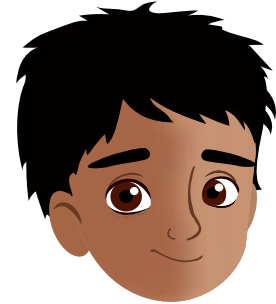
Lee

$$1 \div 100 = 0.01$$



Ebo

$$13 \div 100 = 0.13$$



Mo

$$145 \div 100 = \square$$

Mo's question is a new question. He should follow the same method to find the answer.

There is another way to find the solution. There is a pattern that we could use to help.

