

Y8 Geography – China

Our main questions we will think about today are:

- What impact is development having on the environment in China?
- What is the global environmental impact of rapid Chinese development?

The main consequences of China's rapid industrial development are increased pollution and degradation of natural resources. Problems such as soil erosion, desertification and the steady fall of the water table, especially in the north, pose a threat to the sustainable development of the country.

China has overtaken the United States as the world's biggest producer of carbon dioxide.

However, per head of population, China's pollution remains relatively low - about a quarter of that in the US and half that of the UK.

Activity 1:

Think about about all the different kinds of waste that might be being produced both in the cities and the countryside. What do you think might be happening to that waste? Write a list of possible waste and where it might be going.

Watch this clip – [click here](#) or search this link to find out more about the damage to health and the environment

<https://www.bbc.co.uk/news/av/world-asia-19995748/pollution-from-china-s-growth-takes-toll-on-health>

Activity 2: *Read through these three clips taken from newspaper articles. Pick out the most damaging statement from each, whether it has affected the economy, health, environment of society (the people).*

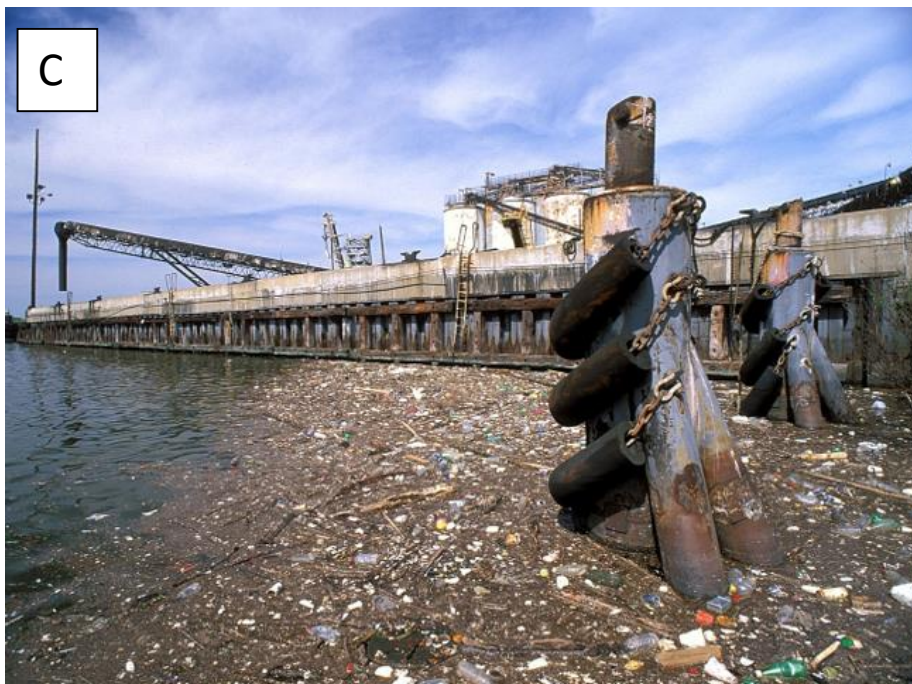
"More than 10% of China's farm land is polluted, posing a "severe threat" to the nation's food production, state media reports. Excessive fertiliser use, polluted water, toxic metals and solid wastes are to blame, the reports said. Rapid economic growth has had a damaging impact on China's environment. Its cities, countryside, waterways and coastlines are among the most polluted in the world. "	"Nine out of ten of the world's most polluted cities are in China. According to the World Bank, air pollution costs the Chinese economy \$25bn a year in health expenditure and lost labour productivity - largely because of the use of coal. There are ongoing environmental debates surrounding the country's dams policy, especially the construction of the Three Gorges Dam in central Hubei province. And the massive building programme in the country - over half the concrete used in the world last year was poured into China - also threatens wildlife and some	"Large parts of China's longest river, the Yangtze, have been irreversibly polluted, state media quotes a report as saying. Around one-tenth of the 6,200km-long river is in a "critical condition" and nearly 30% of major tributaries are seriously polluted, the report found. Around 14bn tons of waste are believed to be dumped into the river each year. The river's aquatic life had been seriously affected, with the annual harvest of aquatic products falling from 427,000 tons in the 1950s to 100,000 tons in the 1990s, the report found. A huge reservoir created by the Three Gorges Dam - the world's largest hydro-power project - had also been seriously polluted with
---	--	---

	very fragile parts of the world's ecology.”	pesticides, fertilisers and sewage from passenger boats. “
--	---	--

Activity 3

Below are four pictures of parts of China whereby the environment is being negatively affected, write a summary that illustrates what is happening in each picture. Try to explain in your summary what the short term and long term effects of this type of pollution may be. Explain how they will impact the environment, the people and potentially health.





Activity 4

Food for thought – how do you think the rest of the world might be impacted if China continues with these high levels of pollution?